

BALDOR • ***RELIANCE***

Product Information Packet

VaraCorp, LLC

5HP, 1750RPM, 3PH, 60HZ, 184TC, 0641M, TEFC, F1

Part Detail							
Revision:	K	Status:	PRD/A	Change #:		Proprietary:	No
Type:	AC	Prod. Type:	0641M	Elec. Spec:	06WGX182	CD Diagram:	CD0005
Enclosure:	TEFC	Mfg Plant:		Mech. Spec:	06H480	Layout:	06LYH480
Frame:	184TC	Mounting:	F1	Poles:	04	Created Date:	04-05-2012
Base:	N	Rotation:	R	Insulation:	F	Eff. Date:	12-12-2014
Leads:	9#16					Replaced By:	
Literature:		Elec. Diagram:					

Nameplate NP3257E						
CAT.NO.	VECP3665T					
SPEC.	06H480X182G1					
HP	5 TE					
VOLTS	208-230/460					
AMP	14-13/6.5					
RPM	1750					
FRAME	184TC	HZ	60	PH	3	
SER.F.	1.15	CODE	J	DES	B	CL F
RATING	40C AMB-CONT					
SN						
DE	6206	ODE	6206			
NEMA-NOM-EFF	89.5	PF	79			
G.MIN.EFF	87.5	CC	010A			
T. CODE	T3C	T=	160			

Nameplate NP3260E			
SPEC.	06H480X182G1		
D.E. BRG.	30BC02XP30X		
O.D.E. BRG.	30BC02XP30X		
GREASE	POLYREX EM		
RPM MAX	2700	MAX. KVAR	1.7
BLANK			
INV.TYPE	PWM		
T=	160		
C HP FR	60	C HP TO	90
CT HZ FROM	1.7	CT HZ TO	60
VT HZ FROM	0-	VT HZ TO	60
HTR-VOLTS		HTR-AMPS	
HTR-WATTS		MAX. SPACE HEATER TEMP.	

AC Induction Motor Performance Data

Record # 47003 - Typical performance - not guaranteed values

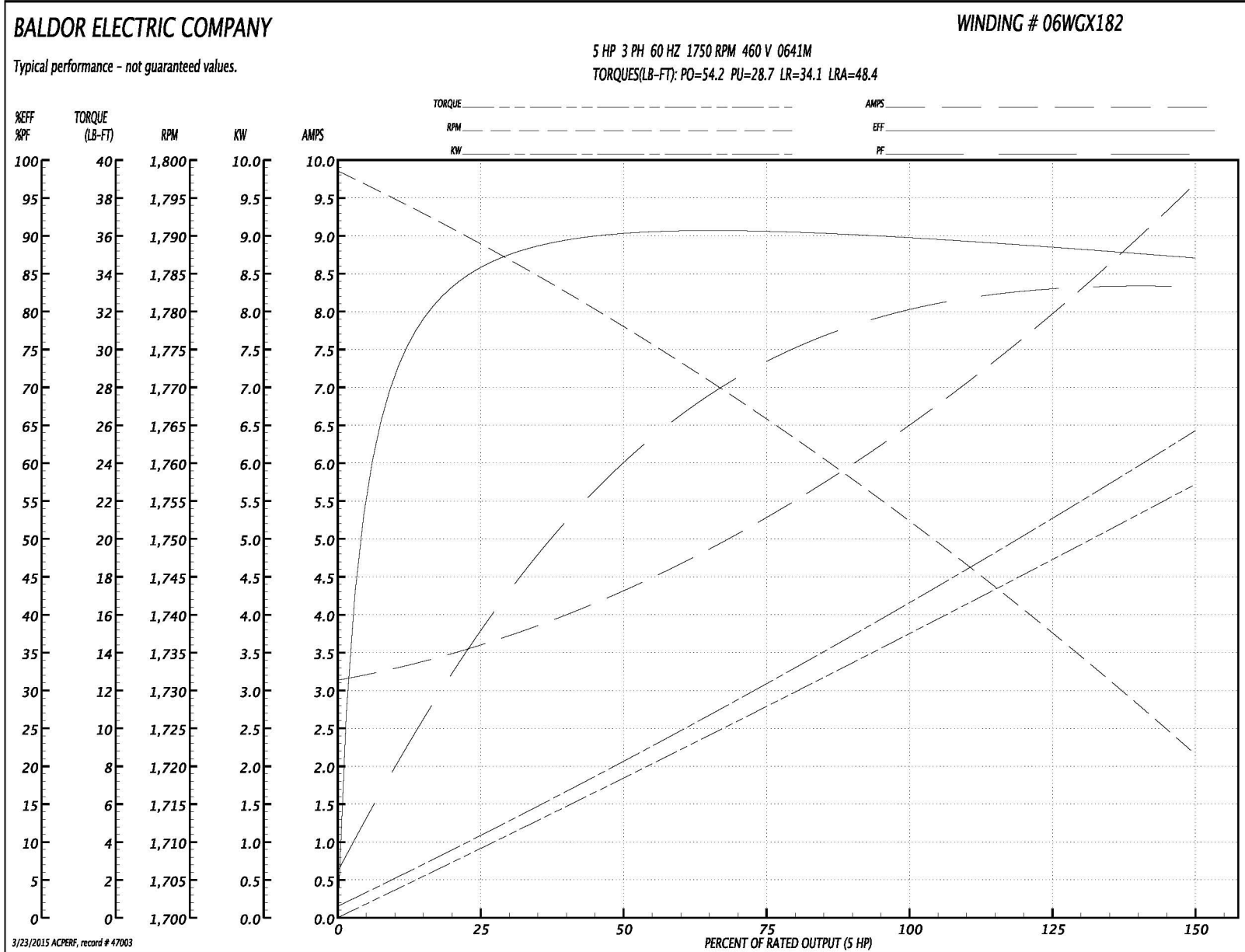
Winding: 06WGX182-R063	Type: 0641M	Enclosure: TEFC
-------------------------------	--------------------	------------------------

Nameplate Data				460 V, 60 Hz: High Voltage Connection	
Rated Output (HP)	5			Full Load Torque	15.1 LB-FT
Volts	208-230/460			Start Configuration	direct on line
Full Load Amps	14-13.2/6.6			Breakdown Torque	54.2 LB-FT
R.P.M.	1750			Pull-up Torque	28.7 LB-FT
Hz	60	Phase	3	Locked-rotor Torque	34.1 LB-FT
NEMA Design Code	B	KVA Code	J	Starting Current	48.4 A
Service Factor (S.F.)	1.15			No-load Current	3.21 A
NEMA Nom. Eff.	89.5	Power Factor	79	Line-line Res. @ 25°C	2.4818 Ω
Rating - Duty	40C AMB-CONT			Temp. Rise @ Rated Load	54°C
S.F. Amps				Temp. Rise @ S.F. Load	67°C
				Rotor inertia	0.382 LB-FT ²

Load Characteristics 460 V, 60 Hz, 5 HP

% of Rated Load	25	50	75	100	125	150	S.F.
Power Factor	40	62	73	79	83	84	81
Efficiency	85.7	90	90.5	89.9	88.7	87	89.2
Speed	1788.2	1777.2	1765	1752.2	1737.4	1721.1	1743
Line amperes	3.53	4.29	5.38	6.64	8.04	9.66	7.48

Performance Graph at 460V, 60Hz, 5.0HP Typical performance - Not guaranteed values



AC Induction Motor Performance Data

Record # 49253 - Typical performance - not guaranteed values

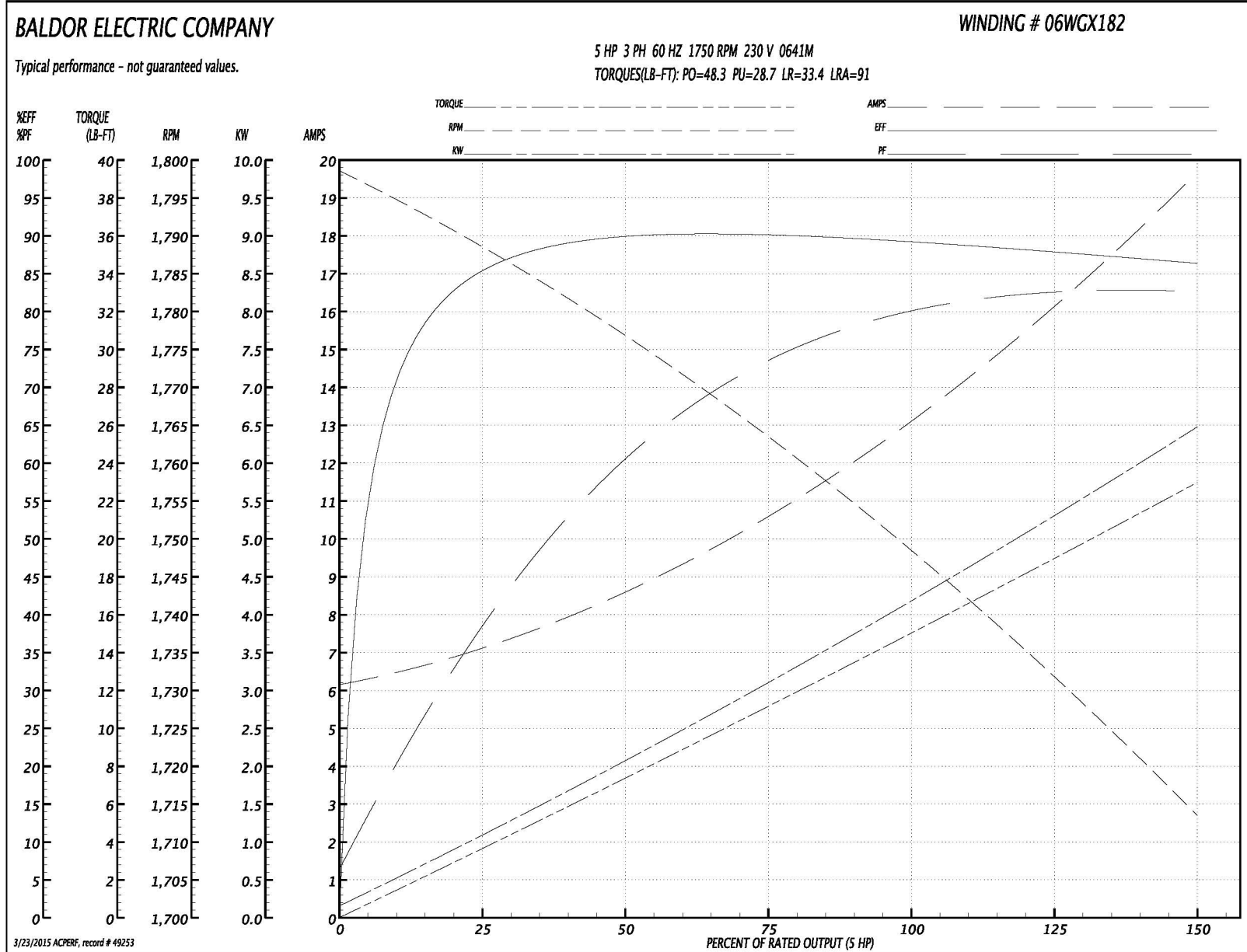
Winding: 06WGX182-R063	Type: 0641M	Enclosure: TEFC
-------------------------------	--------------------	------------------------

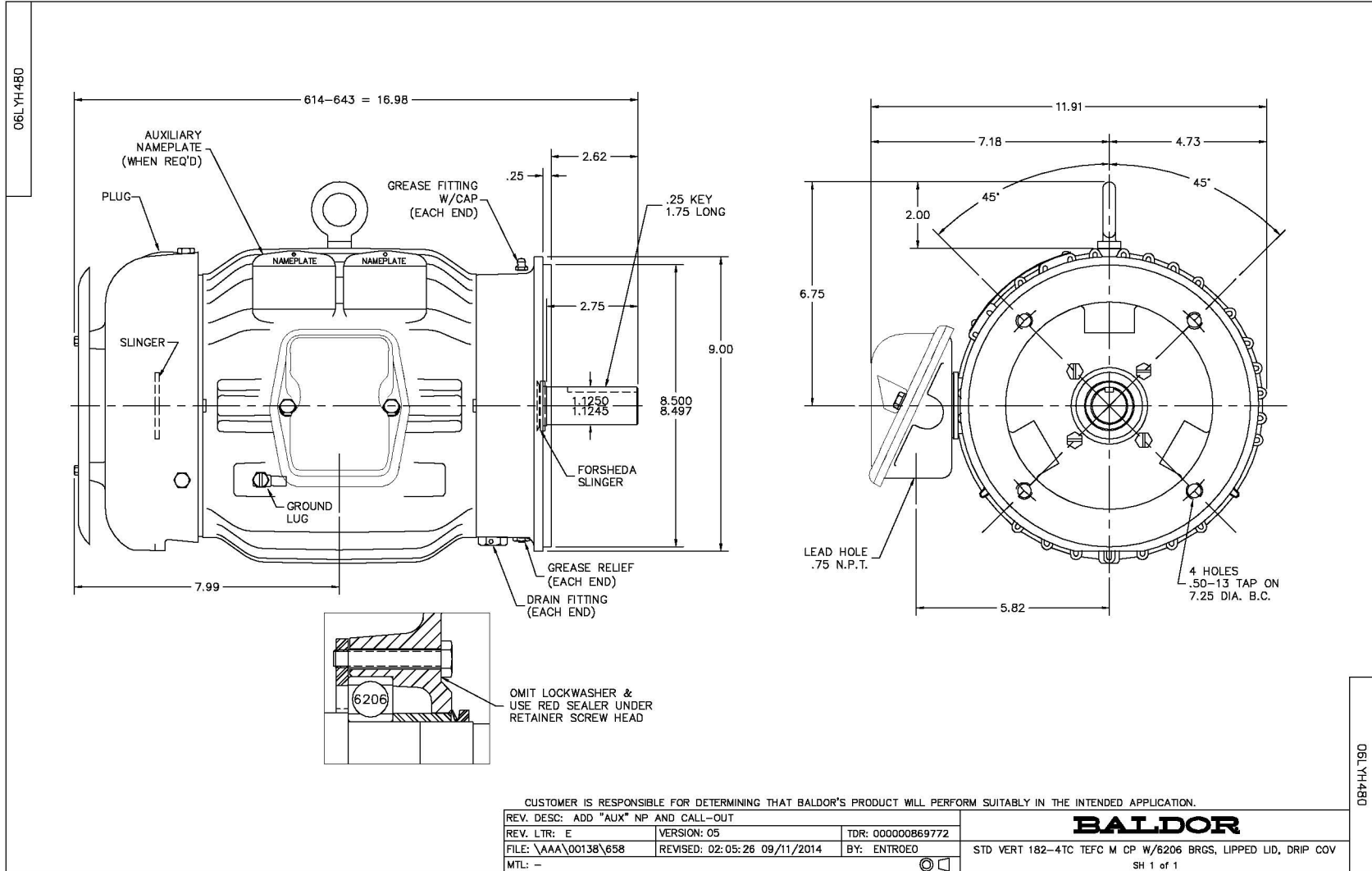
Nameplate Data				230 V, 60 Hz: Low Voltage Connection	
Rated Output (HP)	5			Full Load Torque	15.1 LB-FT
Volts	208-230/460			Start Configuration	direct on line
Full Load Amps	14-13/6.5			Breakdown Torque	48.3 LB-FT
R.P.M.	1750			Pull-up Torque	28.7 LB-FT
Hz	60	Phase	3	Locked-rotor Torque	33.4 LB-FT
NEMA Design Code	B	KVA Code	J	Starting Current	91 A
Service Factor (S.F.)	1.15			No-load Current	6.3 A
NEMA Nom. Eff.	89.5	Power Factor	79	Line-line Res. @ 25°C	0.616 Ω
Rating - Duty	40C AMB-CONT			Temp. Rise @ Rated Load	52°C
S.F. Amps				Temp. Rise @ S.F. Load	63°C
				Rotor inertia	0.382 LB-FT ²

Load Characteristics 230 V, 60 Hz, 5 HP

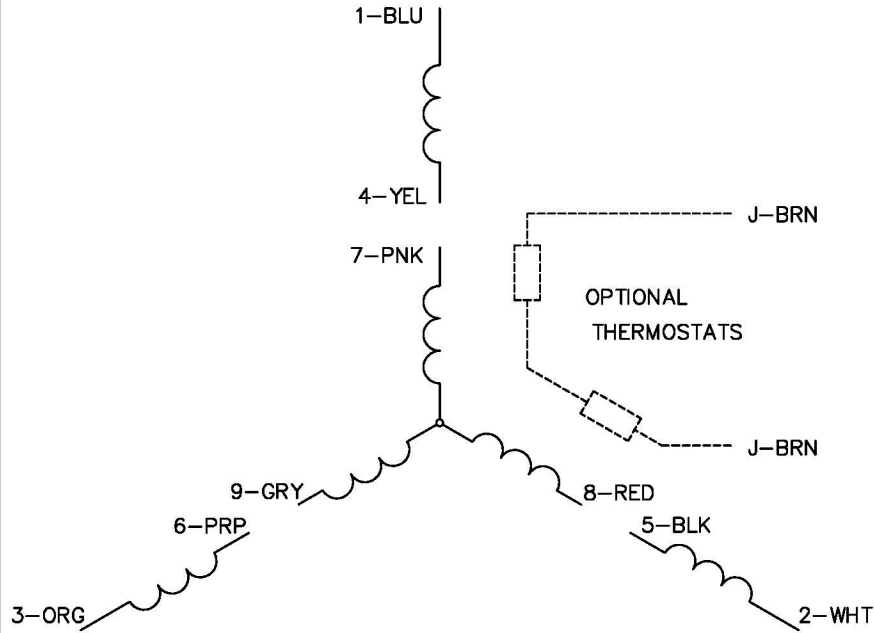
% of Rated Load	25	50	75	100	125	150	S.F.
Power Factor	41	62	73	79	82	83	81
Efficiency	84.7	89.6	89.6	89.8	88.2	86.1	88.8
Speed	1788	1776	1763	1749	1732	1713	1739
Line amperes	6.96	8.52	10.7	13.3	16.2	19.6	15

Performance Graph at 230V, 60Hz, 5.0HP Typical performance - Not guaranteed values

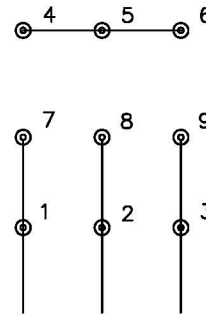




CD0005

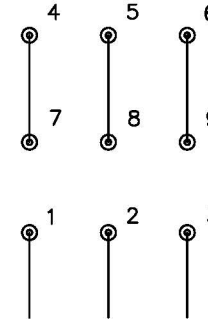


LOW VOLTAGE
(2Y)



LINE

HIGH VOLTAGE
(1Y)



LINE

NOTES:

1. INTERCHANGE ANY TWO LINE LEADS TO REVERSE ROTATION.
2. OPTIONAL THERMOSTATS ARE PROVIDED WHEN SPECIFIED.
3. ACTUAL NUMBER OF INTERNAL PARALLEL CIRCUITS MAY BE A MULTIPLE OF THOSE SHOWN ABOVE.
4. LEAD COLORS ARE OPTIONAL. LEADS MUST ALWAYS BE NUMBERED AS SHOWN.

REV. DESC: REVISE TO SHOW OPTIONAL COLORS			
REV. LTR: E	BY: JLP	REVISED: 01/19/99 10:15	TDR: 0171435
900000		FILE: AAA00005140	MDL: -
		MTL: -	

BALDOR ELECTRIC Co.

3PH, DV, 9 LEADS

CD0005